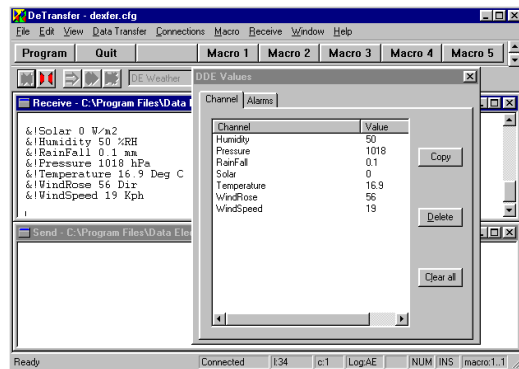


DeTransfer

DATATAKER SUPERVISION SOFTWARE



Data Electronics' *DeTransfer* software provides powerful tools that make it easy to supervise a Datataker data logger and access its data:

- DeTransfer "Connections" are stored descriptions of an entire communication path — from the computer's COM port to a specific Datataker at a local or remote data site. To connect to a particular Datataker, you simply select the appropriate Connection name from a list, click the Connect button, then let DeTransfer do the rest.
- DDE (Dynamic Data Exchange) support means that Datataker measurements can be automatically passed from DeTransfer to other applications (such as Microsoft® Excel) for immediate display and analysis. It also gives other applications the power to control DeTransfer.
- DeTransfer's scripting commands and user-definable macro buttons let you automate recurring tasks such as unloading and filing data, or connecting to a particular data site.
- DeTransfer's terminal emulation interface uses unique send and receive windows for full access to the capabilities of the Datataker.

Connections

DeTransfer maintains a database of user-defined Connections (connection profiles) for one-click connection to Datataker data sites.

You can define a DeTransfer Connection to a Datataker (with or without a Modem Manager), or to any generic serial device (a modem, for example).

A DeTransfer Connection can be direct (using a cable), through any installed modem, or over an Ethernet network using TCP/IP. In addition, a Connection can

- include the Datataker's password (if one has been specified)
- wake a battery-powered Datataker (if the logger is in sleep mode)
- automatically determine the Datataker's baud rate setting and match the computer's COM port to this.

DeTransfer Connections are quick and reliable tools you'll use time and time again to manage communication to data sites.

DDE Data

Because DeTransfer supports the passage of data from a local or remote Datataker into PC-based applications using DDE, Datataker data loggers can now be integrated into systems quickly and easily without the need for complex drivers.

Using Microsoft Windows' DDE mechanism, DeTransfer can pass data in real time to sophisticated analysis and display tools such as the Microsoft Office products, Hewlett Packard's HP VEE, National Instruments' LABView and other SCADA software.

No special data formats are required: when creating a Datataker program, you simply include the characters **&!** in a channel's name to make the channel available to your computer's DDE service.

In addition, using DDE, DeTransfer provides access to time-stamped alarms as they happen, and the last error recorded by the Datataker. You can also

- verify that DDE links are operating by viewing all data available to DDE in DeTransfer's DDE Values window
- transfer DDE links to other applications via the clipboard using Windows' Copy and Paste commands
- log all alarms and errors available for DDE directly to file (when connected).

DDE Remote Control

You can control DeTransfer from another program using DDE commands. For example, from Excel, you can

- define, open and close DeTransfer Connections
- transmit text and command files to a Datataker
- execute defined macro keys
- unload data from a Datataker's memory or memory card
- save data in real time to a file.

DeTransfer's DDE capability means that third party programs only have to deal with incoming data — details of Datataker communication are left to DeTransfer.

Scripting Commands

DeTransfer provides scripting commands (also known as "backslash" commands) that allow you to automate many of DeTransfer's functions.

Instead of initiating a DeTransfer command by choosing it from a menu or clicking a button, you "send" the appropriate backslash command from DeTransfer's send window (or by way of a macro button) in the same way that you send commands to the Datataker. Backslash commands are automatically intercepted by DeTransfer and executed. You can, for example, use backslash commands to

- connect to and disconnect from data sites
- manipulate character strings received from the Datataker
- calculate simple variables and conditionals
- file data using automatically-generated unique file names.

Backslash commands are easily incorporated into your Datataker programs.



DATA ELECTRONICS
(Aust.) Pty. Ltd.

Certified to ISO9002

TOTAL QUALITY COMMITMENT

Macro Buttons

DeTransfer's macro bar contains sixty-four user-definable macro buttons for click-and-send action.

Type Datataker program commands, backslash commands and a name into each macro button (up to 32KB each). Then, when you click the button, its contents are sent.

A macro button can store a single Datataker command or a complete program. You can play macro buttons in user-definable sequences, and you can combine macro buttons and backslash commands to automate complicated procedures.

Send and Receive Windows

DeTransfer's separate send and receive windows are a powerful and unique terminal interface from which you can supervise every one of the Datataker's functions.

Use a send window to

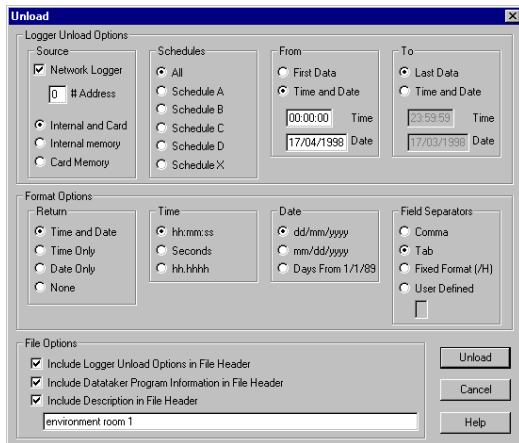
- edit and transmit Datataker programs to a connected data site
- save Datataker programs to disk for later use
- directly import programs created with the DeLogger software family.

Use a receive window to

- display, print and save data returned from the Datataker in real time or from memory
- review the last 30KB of data received from the Datataker — whether connected or not
- save all data received in a file (as long as disk space is available) — when connected.

Easy Unload

DeTransfer's integrated unload dialog box simplifies the transfer of data from the Datataker's memory or memory card to a file on disk:



Requirements

You need the following minimum IBM or compatible computer configuration for DeTransfer:

- Windows 95 or Windows NT 4.0
- 75MHz Intel Pentium processor
- 8MB of RAM
- 5MB of available hard disk space during installation (2MB once installed)

More Information

For further information, please contact Data Electronics or our representatives. Our application engineers are happy to talk over your requirements at any time.

Ordering

DeTransfer (on 3.5" 1.4MB floppy disks)

DEX

Your Datataker distributor is...

Due to continual product improvement, Data Electronics reserves the right to alter the specifications of this product without notice.
All brand and product names are trademarks or registered trademarks of their respective holders.

<http://www.datataker.com>

Data Electronics U.S.A., Inc.
22961 Triton Way, Suite E
Laguna Hills CA 92653 U.S.A.
1-800-9-LOGGER

Phone 949 452 0750 (Int'l +1 949 452 0750)
Fax 949 452 1170 (Int'l +1 949 452 1170)
E-mail deusa@datataker.com

Data Electronics (Aust.) Pty. Ltd.
Certified to ISO9002
7 Seismic Court, Rowville
Victoria 3178 Australia

Phone 03 9764 8600 (Int'l +61 3 9764 8600)
Fax 03 9764 8997 (Int'l +61 3 9764 8997)
E-mail datataker@dataelec.com.au

ACN 006 134 863

Data Electronics (U.K.) Ltd.
26 Business Centre West – Avenue One
Letchworth Garden City
Herts. SG6 2HB United Kingdom

Phone 01462 481291 (Int'l +44 1462 481291)
Fax 01462 481375 (Int'l +44 1462 481375)
E-mail datataker@dataelec.co.uk